

BOLTPLUS ON WEB - Mobile

Version 5.001

USER MANUAL

DOCUMENT OWNER	BSE TECH INFRA SERVICES
DOCUMENT VERSION NUMBER	1.3 04-NOV-2020 1.4 15-OCT-2021
DOCUMENT NAME	MANUAL
DOCUMENT AUTHOR	BOLTPlus On Web PMG TEAM
DOCUMENT SOURCE	BOLTPlus On Web PMG TEAM
LOCATION	P.J. TOWERS, MUMBAI

Table of Contents

Introduction to BOLTPlus On Web - MOBILE	4
1. Login	5
1.1 Login Screen	5
1.2 Change Password	6
1.3 Password Policy	7
2. Home Page	8
3. Market Watch	9
3.1 MarketWatch	9
Create MarketWatch	10
Add Scrip	11
Change Index	12
3.2 MBP (Market Depth)	15
3.3 Delete Scrip	17
4. Market Analysis	18
4.1 Pulse	18
4.2 News	19
4.3 Baskets	20
Fundamental Baskets	20
Technical Baskets	21
Market Driven Baskets	22
4.4 ROBO Talk	23
4. Orders	24
4.1 Order entry window	25
4.2 Types of orders	26
5. Order Book	28
5.1 Order Details	29
5.2 Modify (Order Modification)	30
5.3 Cancel (Order Cancellation)	32
6. Trade Book	33

6.1 Trade Details	34
7. Net Position.....	35
8. DP (Holding)	36
9. Margin Book.....	37
10. Activity Log.....	38
11. Useful Links	39
12. Order Settings	40
13. Payment Gateway.....	41
14. Introduced of Best Price Execution functionality in BOLTPlus On Web Mobile VERSION 5.001.....	42

Introduction to BOLTPlus On Web - MOBILE

BOLTPlus On Web - MOBILE Application gives the Investor Clients of the Brokerage House the convenience of secure and real time access to quotes and trading across several exchange venues including BSE, NSE, MCX and NCDEX. The services are specifically designed to meet the ever-changing needs of the Stock market and investors.

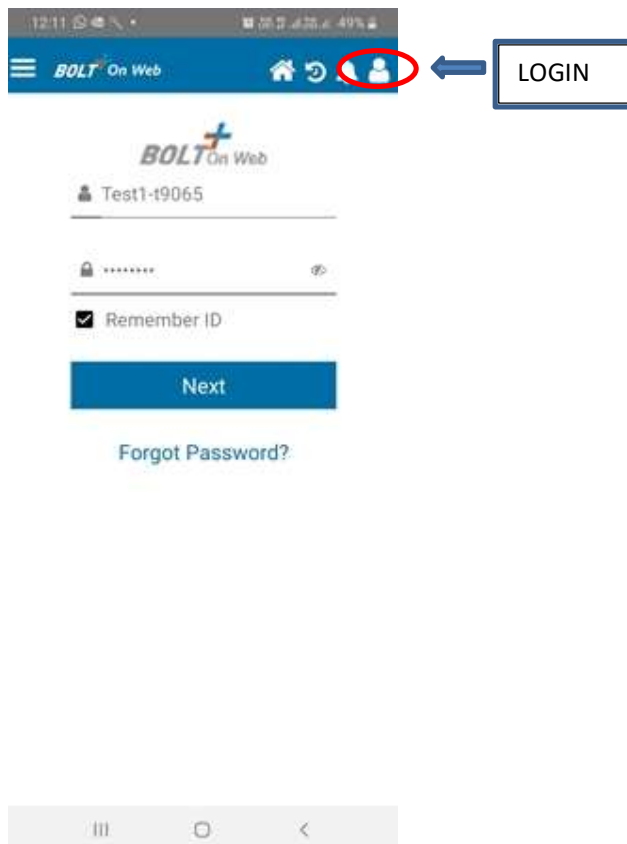
The Investor would be able to

- Place Orders
- Modify, Cancel Orders
- View Order Book
- View Trade Book
- View Position Book
- View Holdings
- View Limits
- View Market Picture (MBP)

1. Login

1.1 Login Screen

When the user starts the Mobile application, to go to the Login Screen the user must click on the below symbol. Once the user clicks on the below symbol the Login Screen will appear. The login screen is visible when the user starts the mobile application. The Valid User name and Login Password must be entered and the investor (user) must click on the 'Next' button.



On clicking 'Next' Button, the OTP (One Time Password) page will appear in which the user has to enter the 6-digit OTP as 2FA sent on the registered email id or phone number. Once the OTP has been entered the user must click on the Login Button which will direct the investor to the default MarketWatch from which the investor can navigate to options such as Marketwatch, Order book, Trade book, Margins, Positions and so on.

1.2 Change Password

When the user logs in for the first time or if the password has expired, the application will prompt for the change of password.

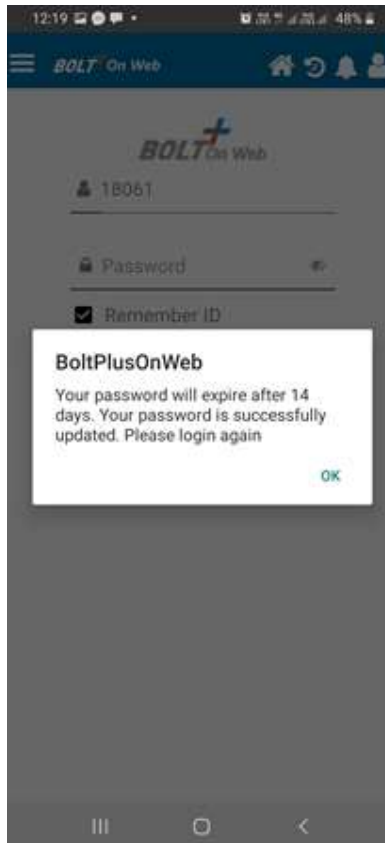
The window for resetting the login password is displayed as follows:



The screenshot shows a mobile application interface for changing a password. At the top, there is a status bar with the time 12:19 and battery level 48%. Below that is a blue header bar with the BOLT On Web logo and navigation icons. A dark blue bar with a back arrow and the text 'Change Password' is positioned below the header. Three white input fields with yellow borders are stacked vertically, each containing a series of dots to represent a password. A blue 'Save' button is located at the bottom of the form.



The user needs to type in the login old password, the new password, and confirm the new password in the respective fields provided. On clicking on the 'Save' Button, the password gets reset and the following confirmation message will be displayed.



1.3 Password Policy

Following is the password policy followed in the BOW MOBILE TRADE Application:

- For encryption of passwords we use 128-bit encryption key with a proprietary logic, also have an option of storing it with 128bit encryption key.
- The system requests an ID & password for logging in.
- The password is encrypted before transmission.
- The password is stored in an encrypted format in the database.
- Change of password is mandatory for the first time user.
- Change password cannot be the same as of the last 3 passwords.
- User cannot login after three consecutive wrong passwords & the user can login only after the password is reset by the administrator.
- The password should be of minimum 8 characters & maximum 12 characters in length.
- It must be Alpha numeric.
- The password will be check against the login ID. The login ID & password cannot be the same.
- Space is not a valid character in the password.
- Password expires automatically after 14 days forcing the user to choose a new password.
- Password can be change by the users at any time as per will.

2. Home Page

After the user has logged in successfully to the application DEFAULT MARKETWATCH(Mobile_Default) will appear which will consist of 10 scrips of BSE Equity segment as below



The investor can navigate to the different screens like adding a new Marketwatch ,changing the view of the marketwatch, adding scrips, placing orders and so on.

3. Market Watch

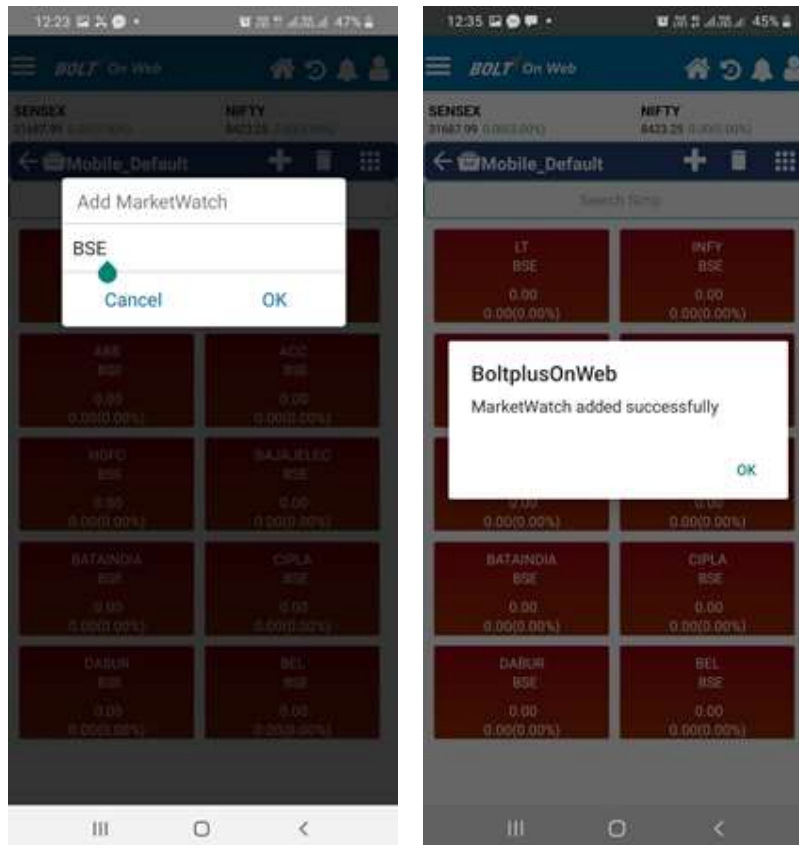
3.1 MarketWatch

Once the user logs in to the platform, the user will have to populate the 'market watch' with the stocks that he/she is interested in. Think about the market watch as a blank slate. Once the stock is loaded on the market watch one can easily transact and query information about it.



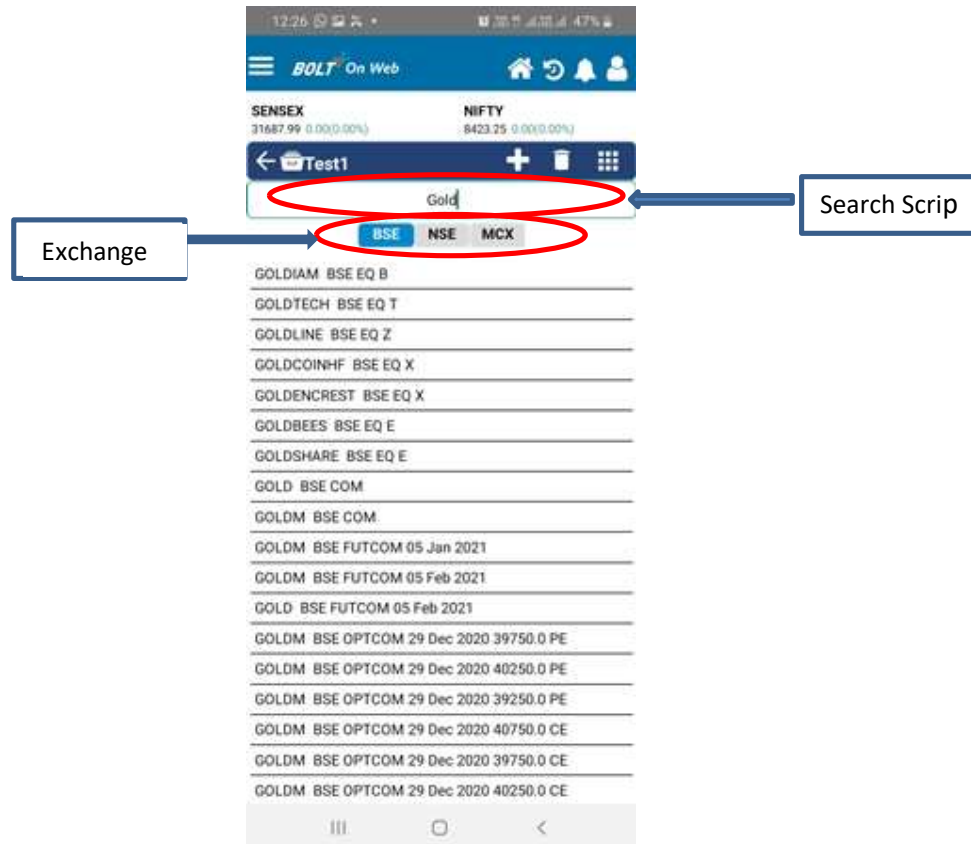
Create MarketWatch

The user can create a Market Watch of scrips to view latest market feeds by clicking on the '+' button from the 'MarketWatch' window. The user must enter the Name for the Market Watch that he wants to create. Once the user puts in the name of the MarketWatch, click on the OK button which will add the Marketwatch.



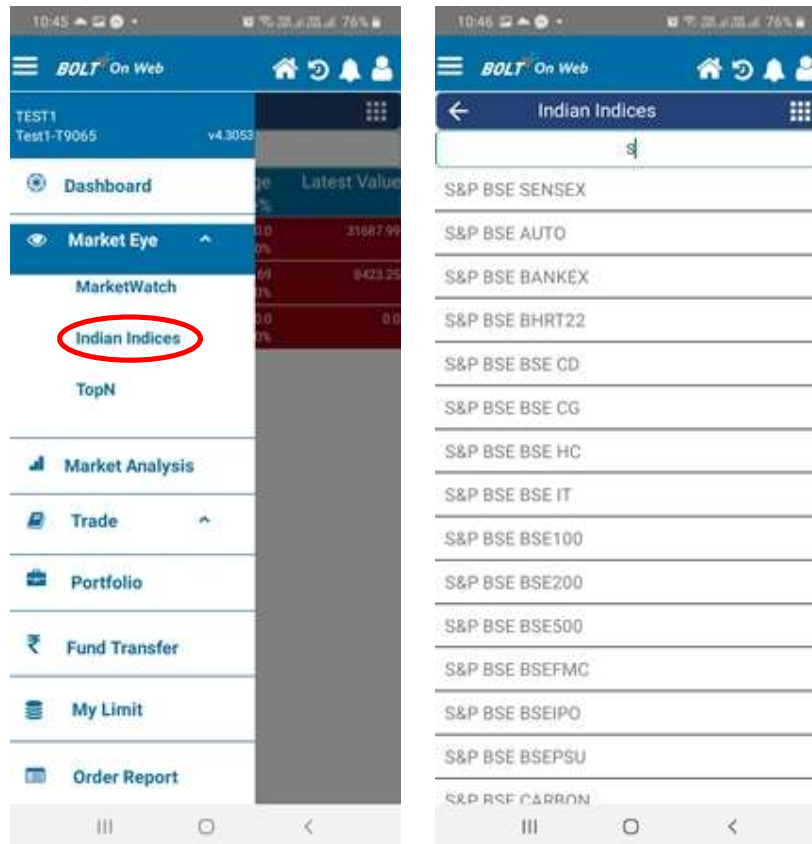
Add Scrip

After creation of MarketWatch user can add scrip/contracts by typing the name or symbol of the scrip in the Search Scrip as below. Select the Exchange (BSE, NSE, MCX) as per the requirement of the investor .Select the scrip from the list that appears and the scrip will be added to the Marketwatch.





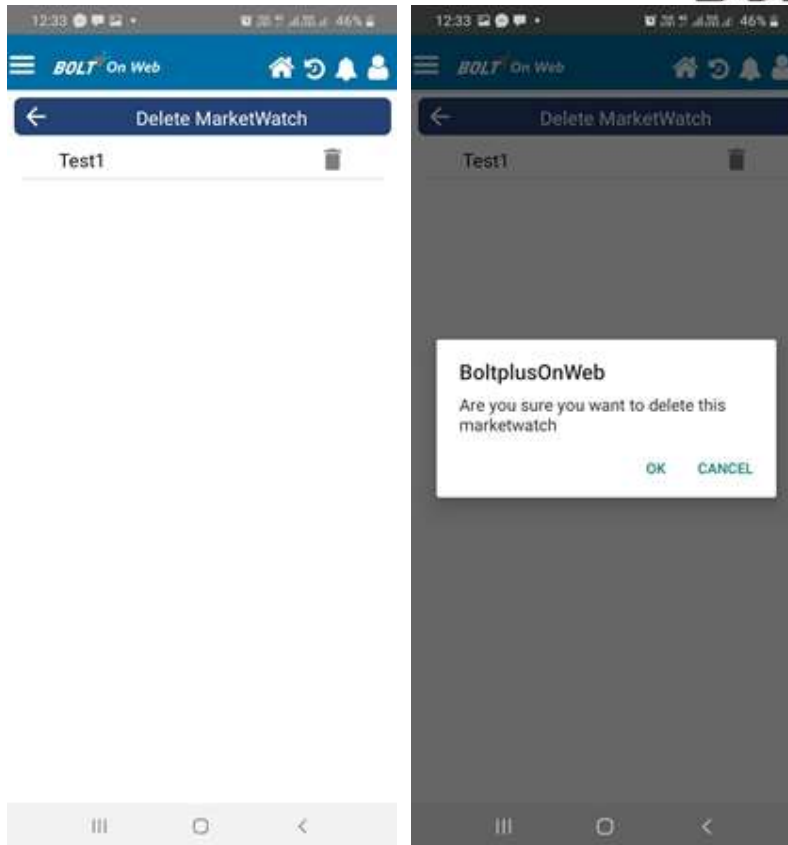
Change Index

The user can change the index in the MarketWatch by clicking on the option as shown below. The user must type the name of the indices he needs to add in the marketwatch. Select the indices from the list and the indices will be added accordingly.



Delete Marketwatch

A marketwatch can be deleted using this option  which appears on the right corner beside the + symbol in the marketwatch. The user/investor must click on the symbol  which appears beside the marketwatch name in the Delete Marketwatch screen ; application will prompt a message to confirm the deletion of the marketwatch. Once the user confirms by selecting the 'OK' button the marketwatch is deleted as shown below:



3.2 MBP (Market Depth)

The Market Depth feature enables the user to retrieve 'Best 5 Buy' & Best 5 Sell' information on a securities. It displays information such as Last Traded Price, Close Price, Open Price, Low Price, High Price, and Price Range and so on for the selected security.



Buy		Sell	
Qty	Price	Qty	Price
5	1232.75	396	1233.00
30	1232.35	93	1233.05
93	1232.30	93	1233.10
182	1232.25	70	1233.40
93	1232.10	417	1233.45

Other Details			
Vol. Traded Today	: 55460	Last Trade Price	: 1232.35
	8		5
Last Trade Qty	: 10	Last Trade Time	: 01:55:18 PM
Avg Trade Price	: 1240.16	Total Buy Qty	: 88146
	6		
Total Sell Qty	: 26198	Close Price	: 1225.70
	5		0

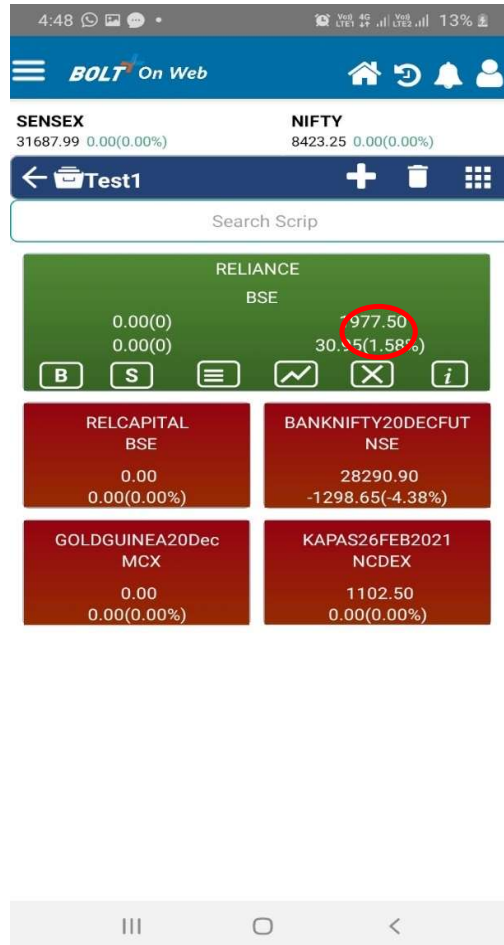
Powered by:MarketPlace Tech Infra Services Pvt.Ltd...

User has to tap on particular scrip to retrieve below highlighted options (Buy, Sell, MBP, and Delete) in market watch window.



3.3 Delete Scrip

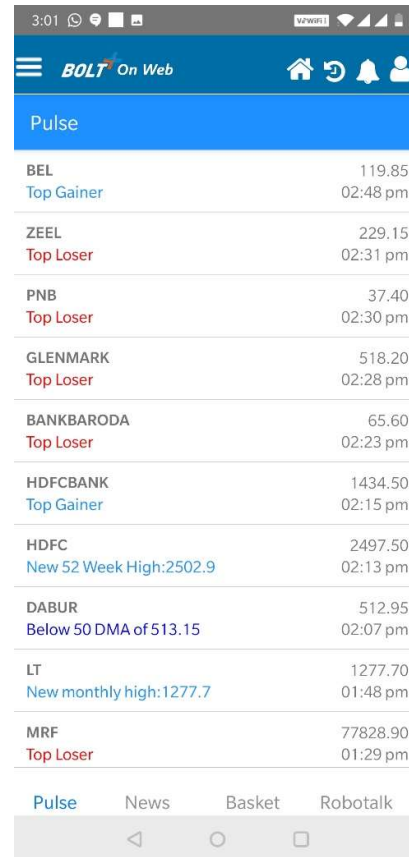
User can delete the selected scrip using the cross option. When the user/investor clicks on the 'Delete' option the application will prompt the confirmation message to delete the scrip. Once the users/investor clicks on the 'OK' button the scrip will be deleted as per below image:



4. Market Analysis

4.1 Pulse

Pulse consolidates market activity in a minute-by minute Feed that summarizes events that have taken place during the past one minute across all our baskets. Each feed item has an instrument tag which allows front ends to take user to stock quote from Pulse. pulse further expands on the idea of delivering relevant information using personalization and notifications.



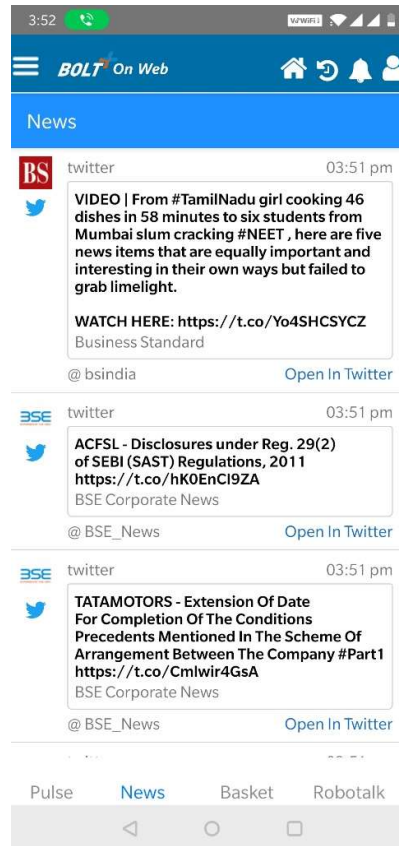
Symbol	Price	Event	Time
BEL	119.85	Top Gainer	02:48 pm
ZEEL	229.15	Top Loser	02:31 pm
PNB	37.40	Top Loser	02:30 pm
GLENMARK	518.20	Top Loser	02:28 pm
BANKBARODA	65.60	Top Loser	02:23 pm
HDFCBANK	1434.50	Top Gainer	02:15 pm
HDFC	2497.50	New 52 Week High:2502.9	02:13 pm
DABUR	512.95	Below 50 DMA of 513.15	02:07 pm
LT	1277.70	New monthly high:1277.7	01:48 pm
MRF	77828.90	Top Loser	01:29 pm

Navigation: Pulse | News | Basket | Robotalk

4.2 News

News Feed is like Pulse Feed is take on what news should look like in trading front ends. It covers multiple sources of accredited news as follows:

- Twitter handles of reputed news agencies
 - RSS Feeds of exchanges and news agencies
 - Exchange Corporate Submissions covered by our own news algorithms
- These news include a plethora of useful alerts and coverages such as :
- Global economical and political news
 - Indian economical and political news
 - Results and corporate announcements
 - Fund house views
 - Market sentiment driving events
 - RBI alerts
 - Event driven announcements
- Like Pulse Feed, the News feed also builds on the idea of personalization, thus delivering curated news both as a personalized feed as well as timely notifications to your users.

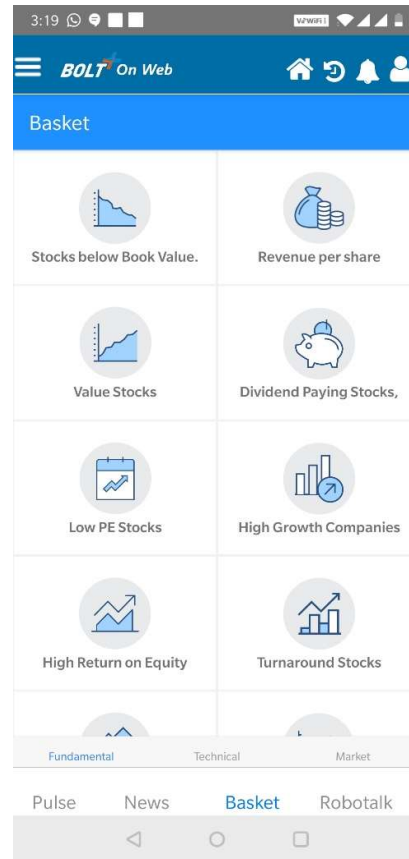


4.3 Baskets

Baskets are automated screeners that generate useful insights on a minute by minute basis and are the source for Market Analysis feature. We cover following baskets across BSE listed securities

Fundamental Baskets

All Fundamental Baskets are updated EOD with latest closing prices and latest fundamental data based on following below parameters

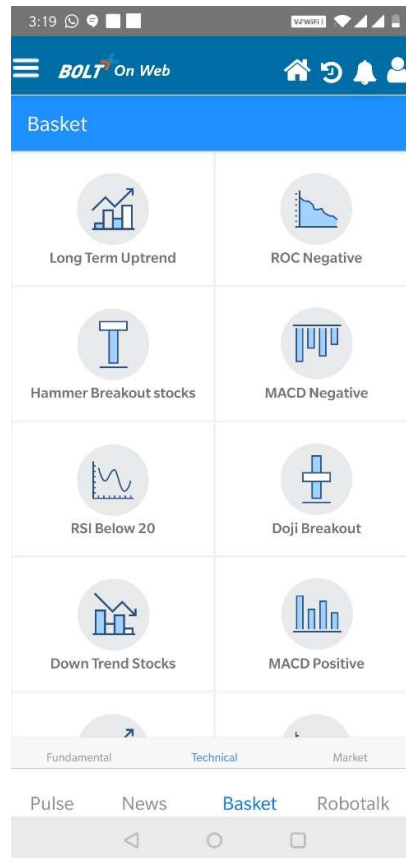


Basket Name	Underlying	Description
High Return on Equity	ALL BSE	Top 20 High Return on Equity Companies
Undervalued Stocks	ALL BSE	Undervalued stocks with MCAP>100 Crores and high growth rate. Uses Graham Number to find undervalued stocks. Covers All
Low PE Stocks	ALL BSE	Stocks with Price to Earning Ratio between 0 to 10.
Stocks Below Book Value	ALL BSE	Stocks with Last Traded Price below Book Value
Top 20 Market Cap	ALL BSE	Companies with Highest Market Cap
High Reserve	ALL BSE	Top 20 High Reserve Companies
Value Stocks	ALL BSE	Stocks with Profit>100 Cr. with near-zero Debt-Equity and EPS>20 with ROCE>40%. Covers all BSE Stocks and filters the quality big ones.
Revenue Per Share	ALL BSE	Top 20 Highest Revenue per Share companies
Low Debt/Equity	ALL BSE	Companies having Lowest Debt to Equity
High PE	ALL BSE	Highest PE Stocks
Dividend Paying companies High Growth	ALL BSE	Highest Dividend Paying companies

High Growth	BSE A Group	Companies whose Net Profit is growing with a rate of more than 10% for the past 3 years. This basket tracks BSE 'A' group companies to pick the fastest growing ones
Turnaround Stocks All	ALL BSE	Companies which made quarterly profit against previous quarter loss and show positive Operating Profit. This basket covers all BSE stocks.

Technical Baskets

All Technical baskets are updated on one-minute basis for BSE 100 stocks basket

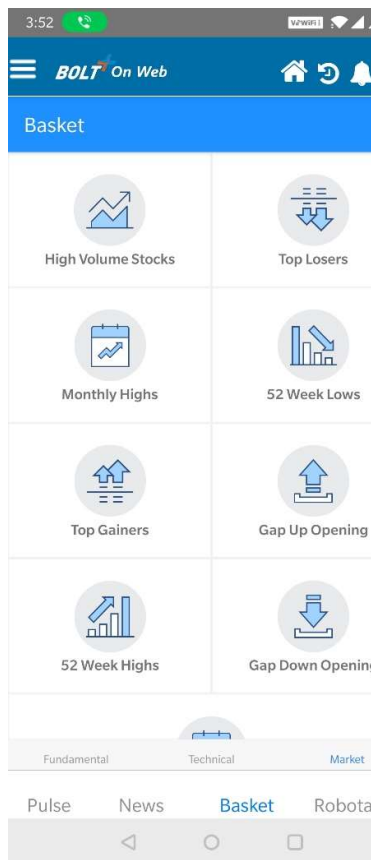


Basket Name	Underlying	Description
Gravestone	BSE 100	Stocks which have created Inverted Hammer Pattern previous day and have given breakout above yesterday's high.
50 DMA Down	BSE 100	Stocks trading below 50 Day Simple Moving Average
50 DMA up	BSE 100	Stocks trading above 50 Day Simple Moving Average
RSI Above 80	BSE 100	RSI Indicator above 80 indicating overbought condition
RSI Below 20	BSE 100	RSI Indicator below 20 indicating oversold condition
MACD Positive	BSE 100	MACD above 0
MACD Negative	BSE 100	MACD below 0

200 DMA Down	BSE 100	Stocks trading below 200 Day Simple Moving Average
200 DMA Up	BSE 100	Stocks trading above 200 Day Simple Moving Average
DOJI Breakout	BSE 100	Stocks which have created Doji Pattern previous day and have given breakout above yesterday's high.
ROC Positive	BSE 100	ROC above 0
ROC Negative	BSE 100	ROC below 0
Bullish Engulfing Breakout	BSE 100	which have created Bullish Engulfing Pattern previous day and have given breakout above yesterday's high
Hammer Breakout	BSE 100	which have created Hammer Pattern previous day and have given breakout above yesterday's high.

Market Driven Baskets

These baskets are driven purely by price movement and cover BSE A group stocks. They are updated on minute by minute basis.

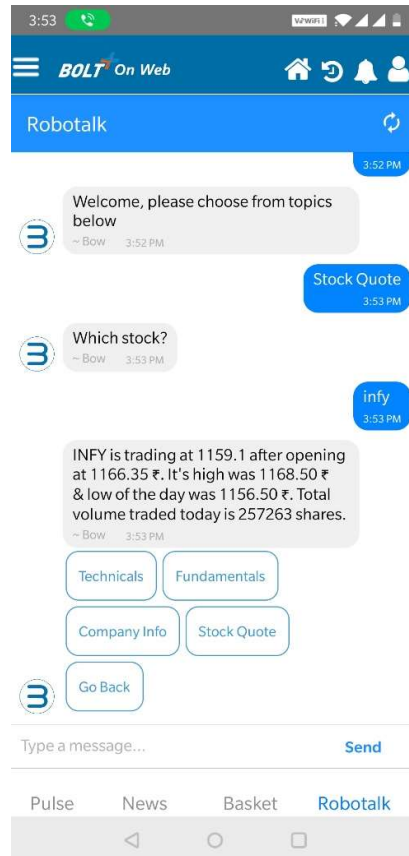


Basket Name	Description
Gap Down Stocks	which have created Inverted Hammer Pattern previous day and have given breakout above yesterday's high.
High Volume	Stocks with at least 3 times the volume than 30 day average. This basket tracks
Monthly Low	Stocks that have hit the lowest level during past 30 days
Monthly High	Stocks that have hit the highest level during past 30 days
Top Losers	Top 20 Losers
Top Gainers	Top 20 Gainers
52 Week High	52 Week Highs hitting companies
52 Week Low	52 Week Low hitting companies

4.4 ROBO Talk

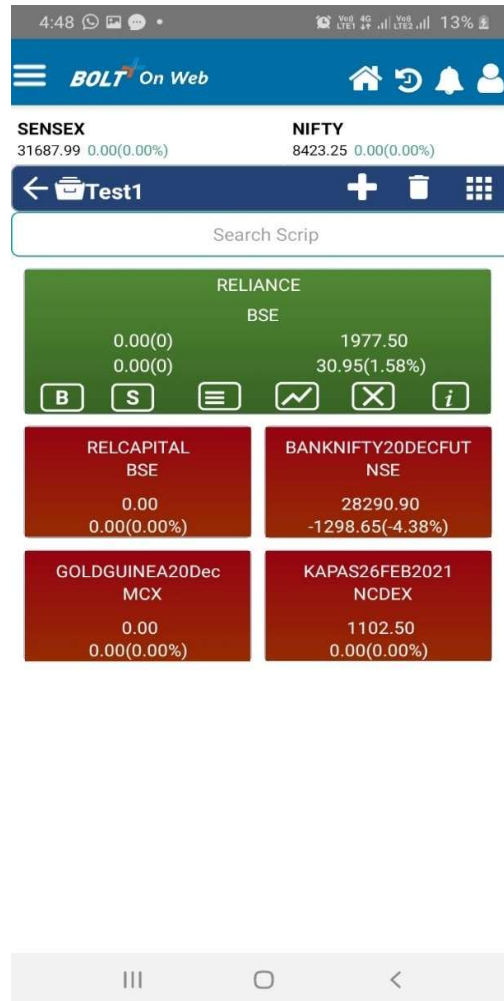
ROBO Talk provides can be used by front ends to deliver queries and leads to a centralized endpoint. Connected with our chatbot, these create a seamless ticketing experience for your users. The chatbot itself is culmination of all our product suites providing the following at a touch of a button

- Market snapshot: Sensex view with market movement
- Stock Quote
- Watchlist – let your users track their watchlists within the chatbot.
- Baskets – baskets are available within the chatbot in form of a conversation
- Technical – stock profile, events personalized to users are embedded in the chatbot
- Fundamentals –we provide Fundamental information on a stock across 150+ fundamental indicators.



4. Orders

To Buy or Sell the scrip the user/investor has to click on the scrip. On selection of the scrip the following window appears.



In the above screen, the user must click on the 'Buy/ Sell' option under specific scrip, from where users will be able to place orders.

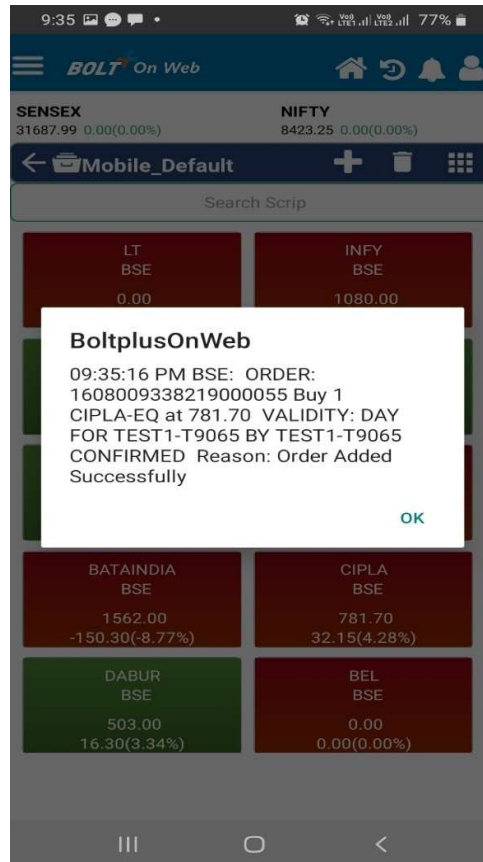
4.1 Order entry window

The user will be able to see symbol, exchange and series loaded by default and user need to select Book (RL, SL), Retn (EOSESS, EOTODY), Product (Intra, CNC), user need to enter Qty, Price, Trigger Price (In case of StopLoss order), DQ(Disclosed Quantity).

The left screenshot shows the 'Order Entry' screen. At the top, there are tabs for 'BSE' and 'NSE'. Below them is a table for 'CIPLA BSE' with two columns of prices: 781.45 and 781.70 in the first column, and 32.45(4.32) and 782.00 in the second column. Below the table are two buttons: 'Buy' (green) and 'Sell' (red). The 'Buy' button is selected. Below these are input fields for: Quantity (1), Dis. Quantity (Disclosed Quantity), Price (781.70), Order Type (Limit), Product (Intraday), IOC (OFF), and Validity (EOTODY). A green 'Submit' button is at the bottom.

The right screenshot shows the 'Order Preview' screen. It displays the same market data as the left screen. Below the data is a form with the following fields: Quantity (1), Dis. Quantity (empty), Price (781.70), Order Type (Limit), Product (Intraday), IOC (OFF), and Validity (EOTODY). At the bottom, there are three buttons: 'Modify', 'Cancel', and 'Confirm'.

After entering the quantity and price the user should click on the 'Submit' option and the order review screen will be appear where the user can review the order details and then press on Confirm to submit the order to the exchange.



Once the order is submitted to the exchange, the order status will be reviewed in the order book window.

4.2 Types of orders

Limit Order

A limit order is an order to buy or sell a security at a specific price. A buy limit order can only be executed at the limit price or lower, and a sell limit order can only be executed at the limit price or higher.

E.g. If the current market price of Idea Cellular is Rs.75 & you wish to Buy at Rs. 70 or Sell at Rs. 80, you have to place a Limit Order.

Market Order

A market order is an order to buy or sell a stock at the current market price. The advantage of a market order is you are almost always guaranteed your order will be executed.

Stop Loss Limit Order

A stop loss limit order is an order to buy a security at no more (or sell at no less)

than a specified limit price. This gives the user some control over the price at which the trade is executed, but may prevent the order from being executed. A stop loss buy limit order can only be executed by the exchange at the limit price or lower. A stop loss sell limit order can only be executed at the limit price or higher.

E.g. If you have short sold NTPC @ Rs.145 in expectation that the price will fall, in case of price increase, you can limit the loss by placing a Stop Loss Buy order. In the Buy Screen we can put the trigger price @ Rs.150 and Limit Price @ Rs.155. As soon as NTPC's last traded price rises above Rs. 150, a limit order for NTPC @ Rs. 155 will get activated.

Stop Loss Market Order

A stop loss market order is an order to buy or sell a security at the current market price prevailing at the time the stop order is triggered. This type of stop loss order gives the user no control over the price at which the trade will be executed. A sell stop market order is an order to sell at the best available price after the price goes below the stop price. A sell stop price is always below the current market price. A buy stop market order is typically used to limit a loss (or to protect an existing profit) on a short sale. A buy stop price is always above the current market price.

5. Order Book

The user can view all the details of the orders placed, by clicking on 'Order Book'. This book will show the pending orders. The user can view all orders as shown in below window.

Symbol	Pend./Tot. Qty	Price
Exchange	Action	Status
NIFTY20DEC FUT	75/75	13000.05
NSE	Buy	pending
INFY	10/10	1150.00
NSE	Buy	pending
KAPAS21Feb	1/1	1102.50
NCDEX	Buy	pending
CHANA20Dec	10/10	5203.00
NCDEX	Buy	pending
CHANA20Dec	10/10	5203.00
NCDEX	Buy	pending
CHANA20Dec	10/10	5203.00
NCDEX	Buy	pending
CHANA20Dec	10/10	5204.00
NCDEX	Buy	pending
CHANA20Dec	10/10	5204.00
NCDEX	Buy	pending

5.1 Order Details

The user can select a particular order for which he requires the order details. User can get detailed information about the Product (Intra/CNC), book, Buy/Sell, Trigger price, Price, Qty Details, Scrip/Contract Name, Exchange, Exchange Order No., Time details, etc.



The screenshot displays the BOLT On Web mobile application interface. At the top, there is a status bar with the time 2:46 and various system icons. Below the status bar is the application header with the BOLT On Web logo and navigation icons. The main content area is divided into two tabs: ORDERBOOK and TRADEBOOK. The ORDERBOOK tab is active, showing a table with columns for Symbol, Exchange, Pend./Tot. Qty, Action, Price, and Status. The first row shows NIFTY20DEC FUT on NSE with a quantity of 75/75, a price of 13000.05, and a status of pending. Below this table, there is a detailed view of the selected order for NIFTY20DEC FUT (Buy)/NSE. This view includes fields for Filled Qty (75/75), Value (975003.75), Price (13000.05), Status (pending), Type (Normal), Validity/Product (DAY/Intra), User (24S010-T9065), Time (14:44:32), Exch Time (14:44:32), Ord. ID (100000135), and Exch. ID (1100000000034949). At the bottom of the detailed view, there is a table showing other orders in the book, including INFY, KAPAS21Feb, NCDEX, CHANA20Dec, and NCDEX. The bottom of the screen features a navigation bar with three options: Normal, AMO, and Batch.

Symbol	Exchange	Pend./Tot. Qty	Action	Price	Status
NIFTY20DEC FUT	NSE	75/75	Buy	13000.05	pending

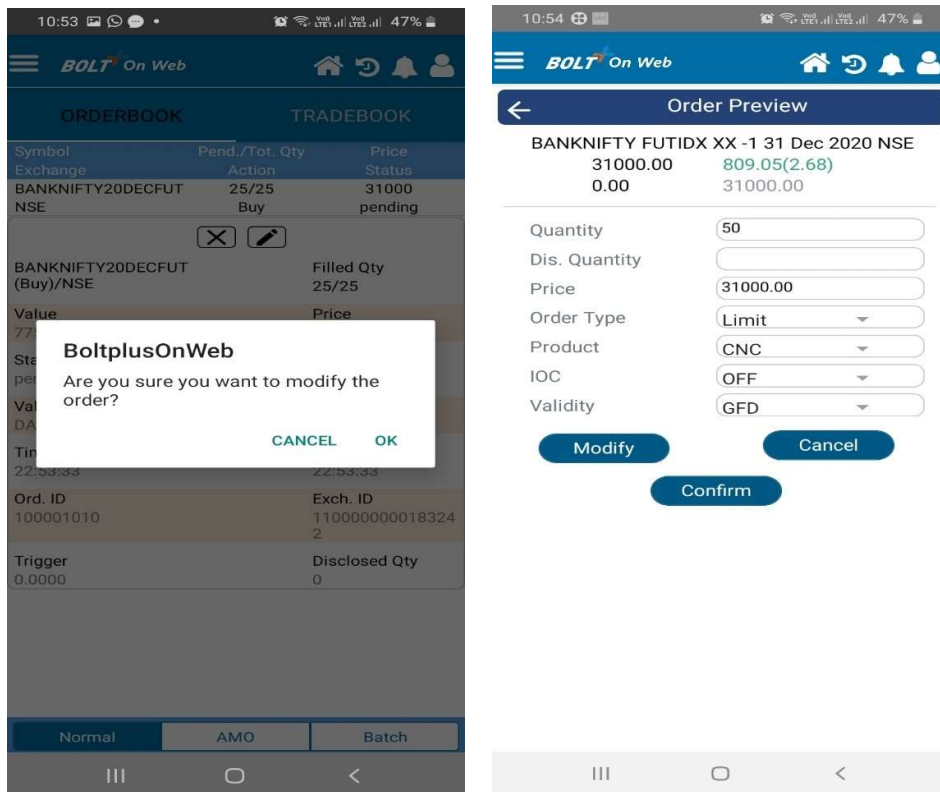
NIFTY20DEC FUT (Buy)/NSE		Filled Qty	75/75
Value	975003.75	Price	13000.05
Status	pending	Type	Normal
Validity/Product	DAY/Intra	User	24S010-T9065
Time	14:44:32	Exch Time	14:44:32
Ord. ID	100000135	Exch. ID	1100000000034949
Trigger	0.0000	Disclosed Qty	0

Symbol	Exchange	Pend./Tot. Qty	Action	Price	Status
INFY	NSE	10/10	Buy	1150.00	pending
KAPAS21Feb	NCDEX	1/1	Buy	1102.50	pending
CHANA20Dec	NCDEX	10/10	Buy	5203.00	pending
CHANA20Dec	NCDEX	10/10	Buy	5203.00	pending
CHANA20Dec	NCDEX	10/10	Buy	5203.00	pending

User has option to cancel and modify order in same screen.

5.2 Modify (Order Modification)

To modify an order, the user must select the required open order that needs to be modified from the order book and select pen type option. The following window appears to enter the new parameters for order modification:



The quantity and price of the order can be modified by the user by entering the new details. Once the user clicks on 'Modify' option, the order status window appears and when the user clicks on 'OK', the following message appears and the modified order can be seen in 'Order Book'.

10:54 47%

BOLT+ On Web

ORDERBOOK **TRADEBOOK**

Symbol	Pend./Tot. Qty	Price
Exchange	Action	Status
BANKNIFTY20DEC20	25/25	31000
NSE	Buy	pending

BoltplusOnWeb

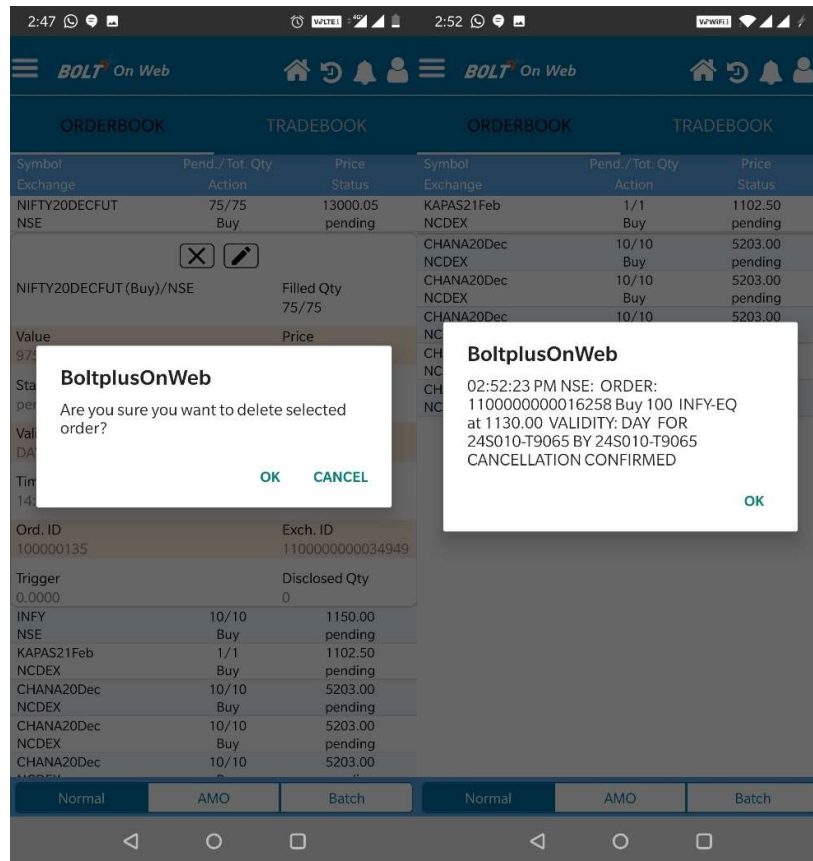
10:54:37 PM NSE: ORDER:
1100000000183242 Buy 50 FUTIDX
BANKNIFTY 31Dec2020 at 31000.00
VALIDITY: DAY FOR TEST1-T9065 BY
TEST1-T9065 MODIFIED

[OK](#)

Normal AMO Batch

5.3 Cancel (Order Cancellation)

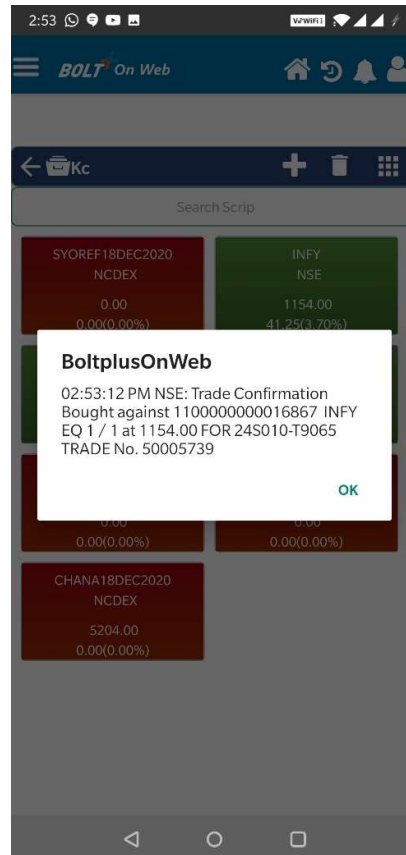
To cancel an order, the user must select the required open order that needs to be cancelled from the order book and select 'Cancel' option. The following 'Confirmation Message' will appear from where the user is required to confirm the order cancellation.



When the user clicks on 'OK', the order will get cancelled, and display the following message.

6. Trade Book

The user can view the entire list of all traded orders and their details by clicking on 'Trade Book' in the 'Homepage' window. The user can see details like Symbol, Exchange, Product, Qty and price.



6.1 Trade Details

The user can select a particular Trade for which he requires the details and get complete information of Trade like Symbol, Exchange, Trade Qty, Price, Product(Intra/CNC), Order Type, Transaction Type, Exchange Order No., Internal Ref. No., Trade ID, Time details, etc.



Symbol	Market	Qty
RELIANCE20DEC FUT	Derivative	505
NSE	Sell	1999.80
INFY	Equity	1
NSE	Buy	1154.00

INFY (Buy)/NSE		Qty
		1
Status	Price	
Complete	1154.00	
Validity/Product	User	
Intra	24S010-T9065	
Time	Exch Time	
14:53:12	14:53:12	
Ord. ID	Exch. ID	
1100000000016867	100000009	
Trade ID	100000009	

CHANA 20Dec	Commodities	10
NCDEX	Sell	5205.00

7. Net Position

The user can view his positions by clicking on the 'Net Position' button in the 'Home' window. The user/investor shall be able to view the consolidated open and settled position for the day and the brought forward open position. The following window will appear, from where the user can his view positions.



Symbol	NetQty	T. Buy	LTP
Exchg. Product	Avg. Price	T. Sell	MTM P/L
CHANA18DEC2020	-10	0	5204.00
NCDEX Intra	5205.00	10	100.0000
INFY	1	1	1154.00
NSE Intra	1154.00	0	0.0000
RELIANCE20DEC FUT	-505	0	1999.80
NSE Intra	1999.80	505	0.0000
Total MTM+PL			100.0000

This screen displays Symbol, Exchange, CMP, M2M+PL, C/F Qty, C/F Value and so on.

User can do Partial Square Off, Square Off and Position conversation from same window

8. DP (Holding)

User/investor will be able to view the current holding details for the scrip. Valuation amount can be viewed as summary based on current price and Qty of stocks by the user/investor. Stocks bought as CNC (equity delivery) show up in DP when the broker (member) uploads the DP holdings.

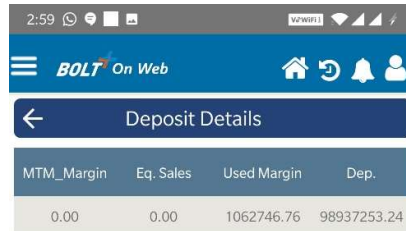


User	Stock Name	DP/Pool	Today Sell
24S010-T9065	ABB	100	0
24S010-T9065	BEL	25	0
24S010-T9065	SBIN	75	0
24S010-T9065	BPCL	200	0

More details like Symbol, Net Available, DP/Pool, CMP, and value is shown in grid above.

9. Margin Book

This window enables the users to view their margin details. These details include Actual deposit given, Eq. Sales, Used deposit and Available deposit for trading.

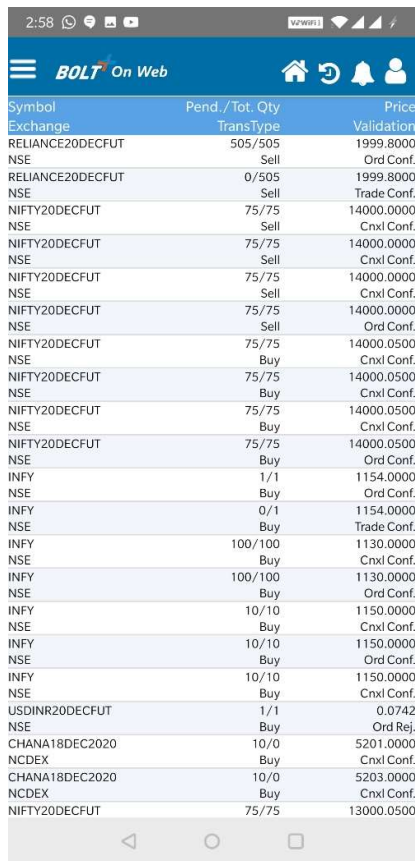


MTM_Margin	Eq. Sales	Used Margin	Dep.
0.00	0.00	1062746.76	98937253.24

The user can view the positions in which the deposit is used, P/L booked, Turnover details with respective security / contract, Exchange.

10. Activity Log

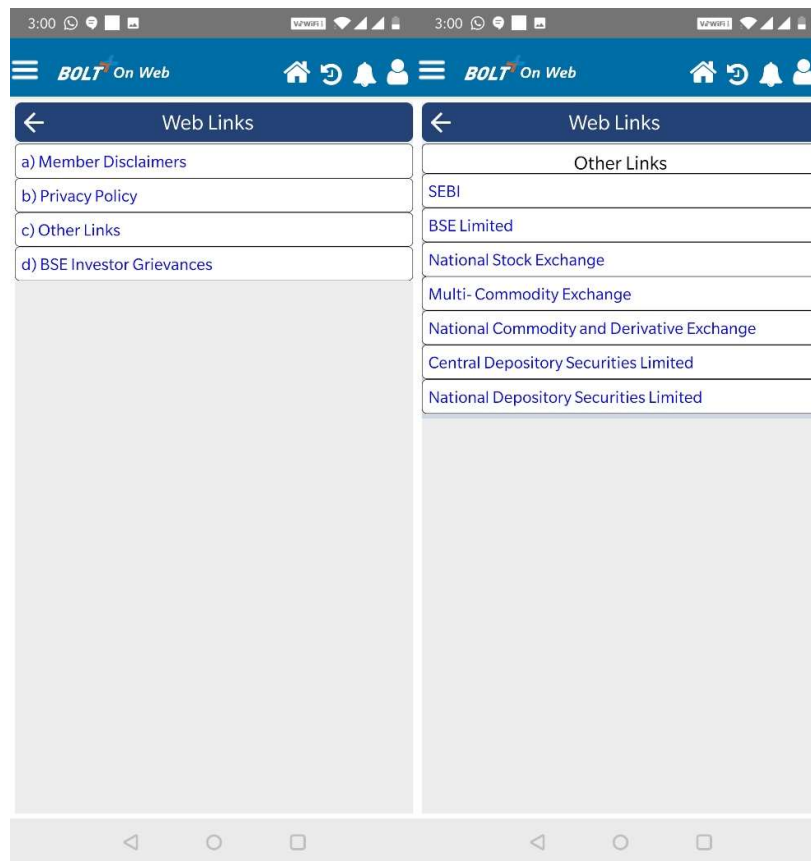
This report provides with the Log of all the activities carried out by the user. This includes - order confirmation, order rejection, order cancellation and Trade confirmation. Rejected orders of all types with rejection reason and required data are also available.



Symbol	Pend./Tot. Qty	Price
Exchange	Trans Type	Validation
RELIANCE20DEC20	505/505	1999.8000
NSE	Sell	Ord Conf.
RELIANCE20DEC20	0/505	1999.8000
NSE	Sell	Trade Conf.
NIFTY20DEC20	75/75	14000.0000
NSE	Sell	Cncl Conf.
NIFTY20DEC20	75/75	14000.0000
NSE	Sell	Cncl Conf.
NIFTY20DEC20	75/75	14000.0000
NSE	Sell	Cncl Conf.
NIFTY20DEC20	75/75	14000.0000
NSE	Sell	Cncl Conf.
NIFTY20DEC20	75/75	14000.0500
NSE	Buy	Cncl Conf.
NIFTY20DEC20	75/75	14000.0500
NSE	Buy	Cncl Conf.
NIFTY20DEC20	75/75	14000.0500
NSE	Buy	Cncl Conf.
NIFTY20DEC20	75/75	14000.0500
NSE	Buy	Ord Conf.
INFY	1/1	1154.0000
NSE	Buy	Ord Conf.
INFY	0/1	1154.0000
NSE	Buy	Trade Conf.
INFY	100/100	1130.0000
NSE	Buy	Cncl Conf.
INFY	100/100	1130.0000
NSE	Buy	Ord Conf.
INFY	10/10	1150.0000
NSE	Buy	Cncl Conf.
INFY	10/10	1150.0000
NSE	Buy	Ord Conf.
INFY	10/10	1150.0000
NSE	Buy	Cncl Conf.
USDINR20DEC20	1/1	0.0742
NSE	Buy	Ord Rej.
CHANA18DEC20	10/0	5201.0000
NCDEX	Buy	Cncl Conf.
CHANA18DEC20	10/0	5203.0000
NCDEX	Buy	Cncl Conf.
NIFTY20DEC20	75/75	13000.0500

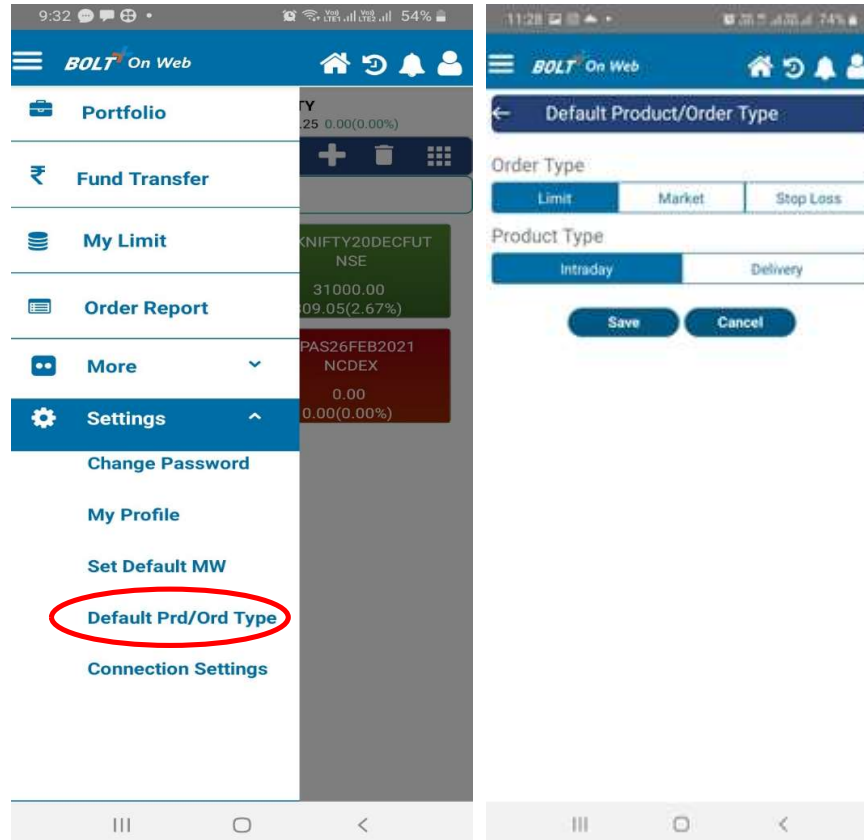
11. Useful Links

Useful Links provides facility to users to open mandatory links of website like SEBI, BSE, NSE, MCX and NCDEX.



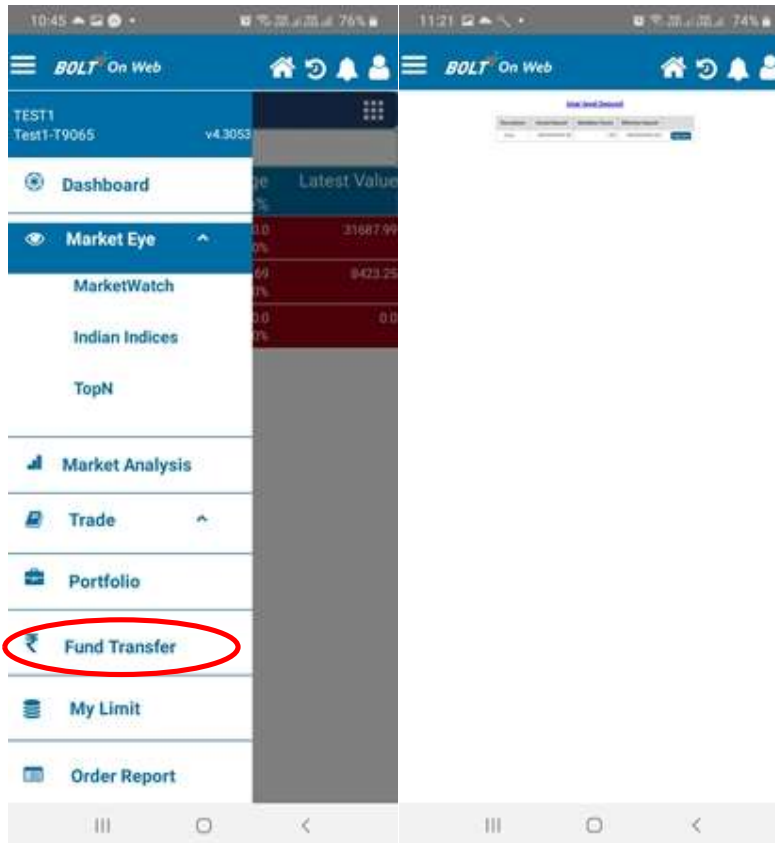
12. Order Settings

The user can change the settings as per his wish by selecting the option of Default Prd/ord Type as shown below. The investor can set default Order Type or Product Type. Depending on the selection of the user can place the order accordingly.



13. Payment Gateway

The user can transfer fund by clicking on the Fund Transfer option as shown below. When the user clicks on the Payment option from the User deposit window he will be directed to the page where the user can put in the amount he requires to deposit .Once the user puts in the amount he can click on the proceed option which will direct the user to the bank site from where the user can login to the Net Banking Account and transfer the fund. The fund transferred will be reflected in the Deposit window.



14. Introduced of Best Price Execution functionality in BOLTPlus On Web Mobile VERSION 5.001

BOLTPlus On Web - BOW Hosted Trading Application provided by ASP “BSE Tech Infra Pvt. Ltd.” is an approved application by NSE Ltd. BOW trading application provides the trading functionalities to exchange Trading members and their users.

It is our constant endeavor to provide Enhanced feature & functionality in the **BOLTPlus On Web - BOW** Hosted Trading Application. With regards to the same, BSE Tech Infra Pvt. Ltd has developed Best Price Execution Functionality.

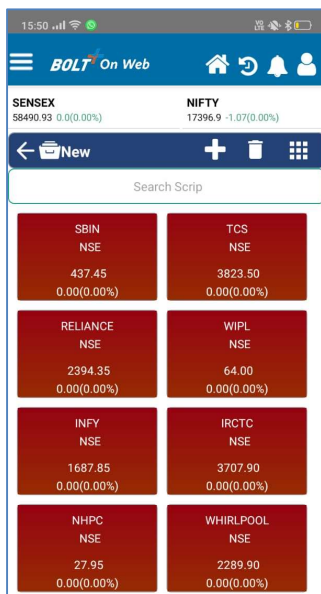
The BOW application users can avail Best Price Execution (BPE) functionality

BOW trading application have developed the same where in by using the Best Price Execution functionality, the front-end application will the check the best available price between exchanges and display the same in the Price field of order entry form along with the respective exchange

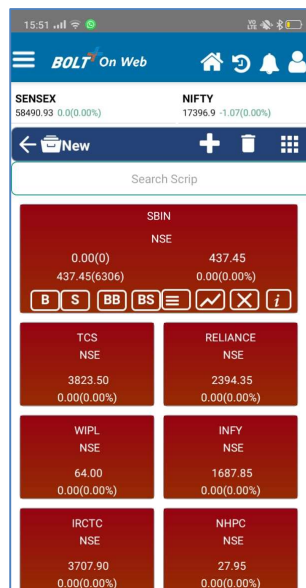
Quantity Field have been left blank in best price order entry form as per regulatory and exchange guidelines. Same are depicted as below:

In BOW mobile application user can invoke Best Price Execution order entry from by using “**BB**” & “**BS**” for best buy order form & best Sell order form respectively. Same are depicted as below.

Market Watch

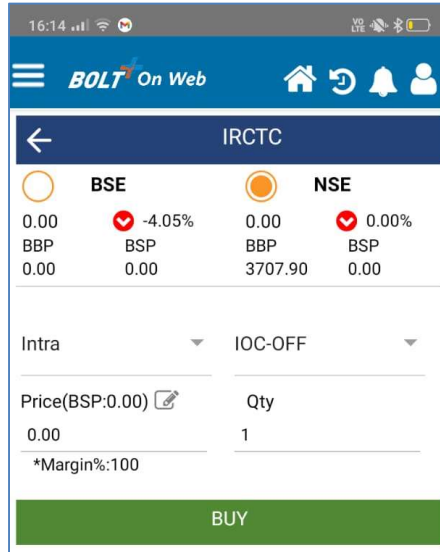


SENSEX		NIFTY	
58490.93	0.00(0.00%)	17396.9	-1.07(0.00%)
Search Scrip			
SBIN NSE 437.45 0.00(0.00%)	TCS NSE 3823.50 0.00(0.00%)	RELIANCE NSE 2394.35 0.00(0.00%)	WIPR NSE 64.00 0.00(0.00%)
INFY NSE 1687.85 0.00(0.00%)	IRCTC NSE 3707.90 0.00(0.00%)	NHPC NSE 27.95 0.00(0.00%)	WHIRLPOOL NSE 2289.90 0.00(0.00%)



SENSEX		NIFTY	
58490.93	0.00(0.00%)	17396.9	-1.07(0.00%)
Search Scrip			
SBIN NSE 0.00(0)			
437.45(6306)		437.45	
0.00(0.00%)		0.00(0.00%)	
<input type="button" value="B"/> <input type="button" value="S"/> <input type="button" value="BB"/> <input type="button" value="BS"/> <input type="button" value="✓"/> <input type="button" value="✗"/> <input type="button" value="i"/>			
TCS NSE 3823.50 0.00(0.00%)	RELIANCE NSE 2394.35 0.00(0.00%)	WIPR NSE 64.00 0.00(0.00%)	INFY NSE 1687.85 0.00(0.00%)
IRCTC NSE 3707.90 0.00(0.00%)	NHPC NSE 27.95 0.00(0.00%)		

Best Buy Price Order Entry



16:14 .all [signal] [wifi] [battery] VO LTE [bluetooth] [battery]

BOLT+ On Web [home] [refresh] [notifications] [profile]

← **IRCTC**

BSE		NSE	
0.00	▼ -4.05%	0.00	▼ 0.00%
BBP	BSP	BBP	BSP
0.00	0.00	3707.90	0.00

Intra ▼ IOC-OFF ▼

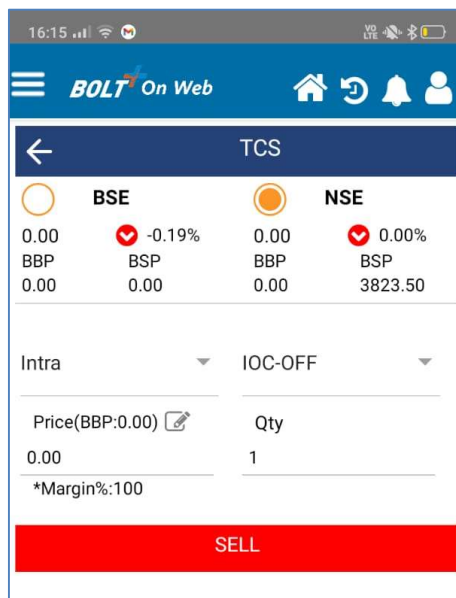
Price(BSP:0.00) ✎ Qty

0.00 1

*Margin%:100

BUY

Best Sell Price Order Entry



16:15 .all [signal] [wifi] [battery] VO LTE [bluetooth] [battery]

BOLT+ On Web [home] [refresh] [notifications] [profile]

← **TCS**

BSE		NSE	
0.00	▼ -0.19%	0.00	▼ 0.00%
BBP	BSP	BBP	BSP
0.00	0.00	0.00	3823.50

Intra ▼ IOC-OFF ▼

Price(BBP:0.00) ✎ Qty

0.00 1

*Margin%:100

SELL